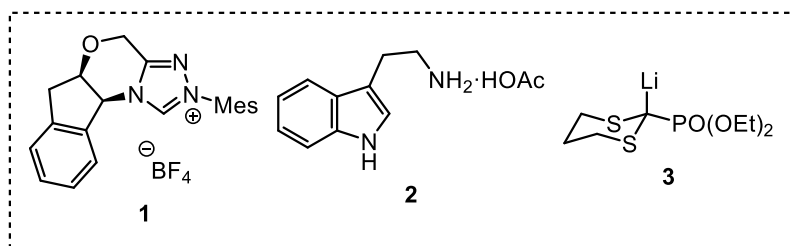


*Mechanism for the enantioselectivity is not required to be answered.

compound **A ¹H NMR (500 MHz; CDCl₃): δ 6.60 (d, *J* = 6.0 Hz, 1 H), 5.37 (dd, *J* = 6.0, 6.0 Hz, 1 H), 4.18-4.11 (m, 4 H, *Et*), 3.37 (t, *J* = 6.5 Hz, 1 H), 3.31 (q, *J* = 6.5 Hz, 1 H), 3.07 (dd, *J* = 17.5, 7.0 Hz, 1 H), 2.38 (dd, *J* = 17.0, 6.5 Hz, 1 H), 1.26-1.21 (m, 6 H, *Et*)

***LDBBA = lithium diisobutyl-*tert*-butoxyaluminum hydride



E. R. Miller, M. T. Hovey, K. A. Scheidt*
J. Am. Chem. Soc. **2020**, *142*, 2187–2192.

