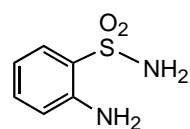
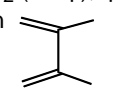


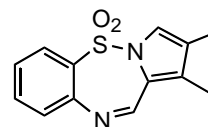
AYamashita, M.; Inaba, T.; Shimizu, T.; Kawasaki, I.; Ohta, S.

Synlett **2004**, 1897

TS
 10.02



- 1) NaNO₂, aq HCl then NaN₃ 90%
 2) SOCl₂ (1 eq), pyridine (2 eq) THF, 0°C, 3hr
 then  93%
 3) P(OMe)₃ (2eq), Et₃N (1 eq), MeOH, 25°C,
 then 2M aq NaOH 50%
 4) HCO₂H, (MeCO)₂O, THF 83%
 5) P(O)Cl₃, (CH₂Cl)₂ 43%



K. Hemming and N. Patel *Tetrahedron Letters*, **2004**, 45, 7553.