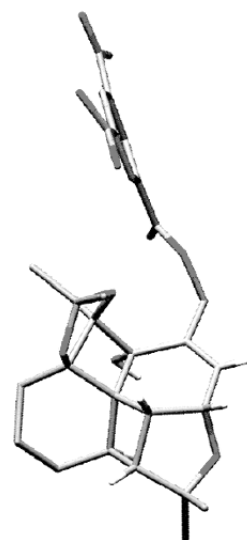
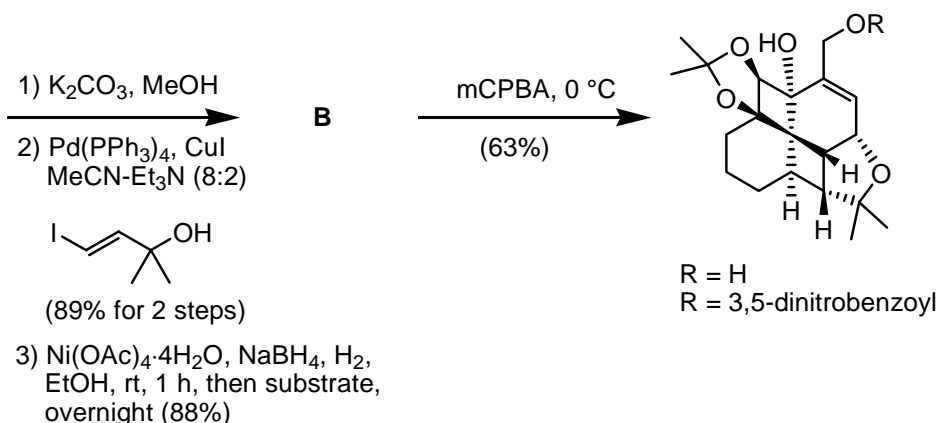
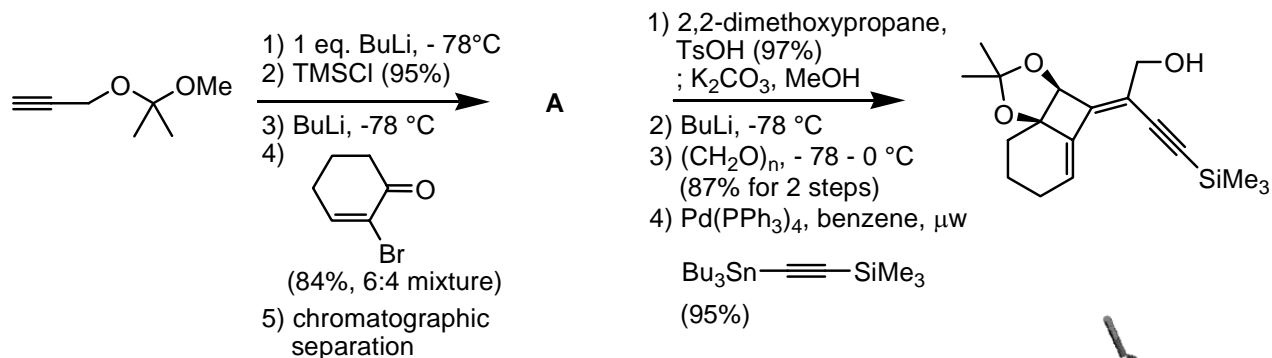


spectral data of ?

IR (KBr) : 1788, 1707 cm^{-1} . ^1H NMR (500.1 MHz, CDCl_3): 3.15 (dd, $J = 16.2$ Hz, $J = 1.7$ Hz, 1 H), 3.21 (dd, $J = 16.2$ Hz, $J = 7.6$ Hz, 1 H), 4.54 (dd, $J = 7.6$ Hz, $J = 1.7$ Hz, 1 H), 7.26 - 7.29 (m, 3 H), 7.31 (d, $J = 6.8$ Hz, 1 H), 7.32 (d, $J = 6.9$ Hz, 1H), 7.36 - 7.39 (m, 2 H), 7.62 (t, $J = 7.3$ Hz, 1 H), 7.92 (dd, $J = 8.2$ Hz, $J = 1.6$ Hz, 1 H). ^{13}C NMR (125.7 MHz, CDCl_3): 36.3, 36.4, 106.8, 113.9, 117.3, 123.2, 125.1, 127.1 (2C), 128.5, 129.7 (2C), 133.4, 139.8, 153.6, 157.7, 161.2, 164.7. MS (EI): m/z (%) = 292 (8) [M^+]

Yavari, I. *et al. Synlett* **2008**, 1153



X-ray crystal structure of 3,5-dinitrobenzoyl derivative