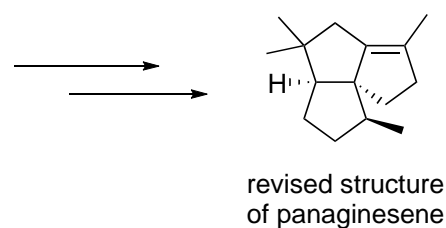
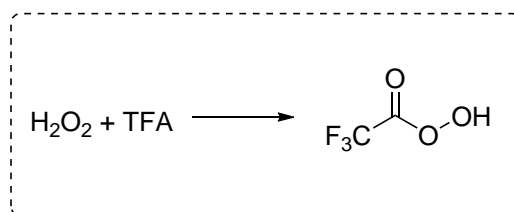
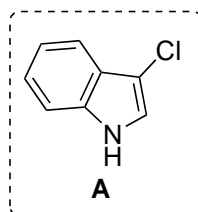
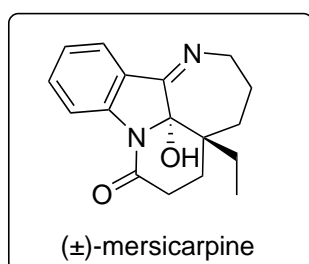
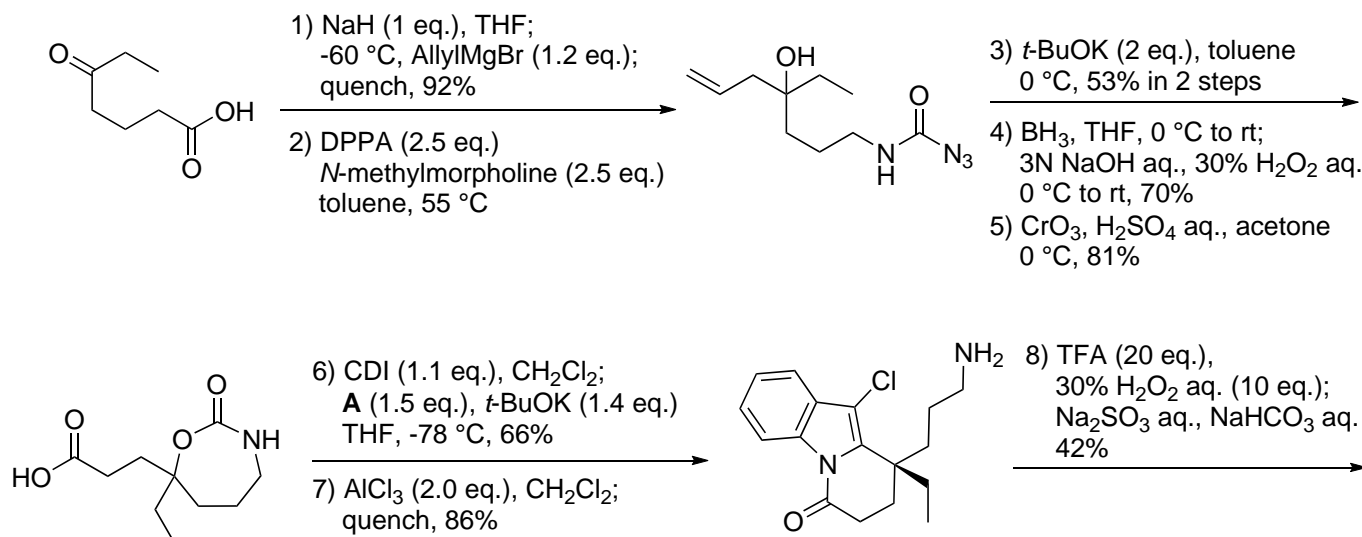


Hint (A): ¹³C-NMR: 208.3, 207.2, ...
 One is ketone carbonyl, the other is ???



Geum, S.; Lee, H.-Y. *Org. Lett.* **2014**, ASAP. DOI: 10.1021/ol500849m



G. Liang *et al.* *Org. Lett.* **2014**, *16*, 1653.