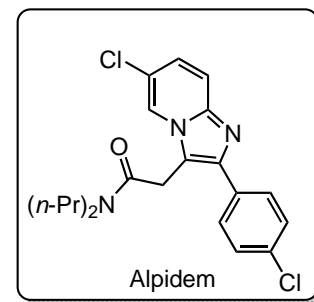
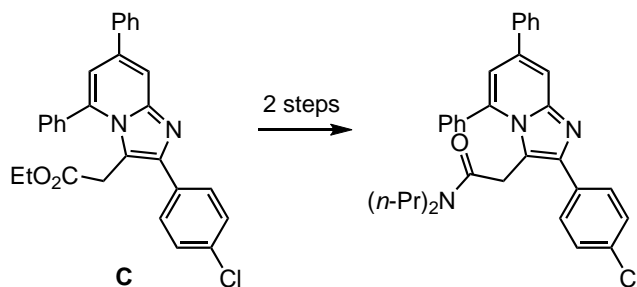
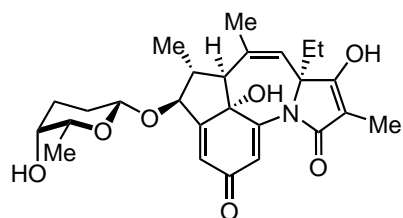
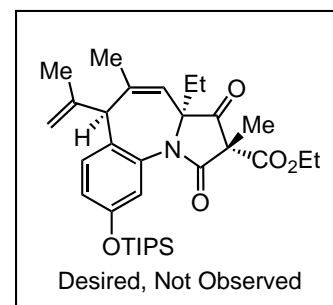
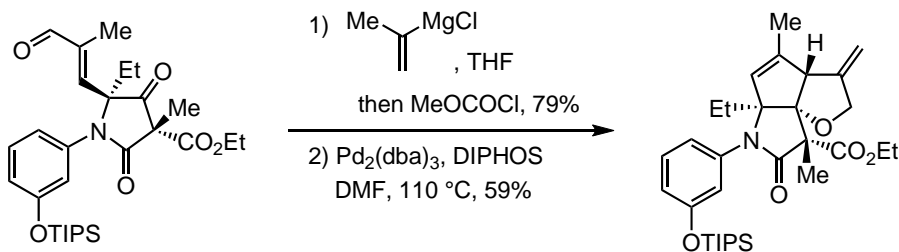


- 1) LiOH (5.0 eq.)  
 MeCN-H<sub>2</sub>O, rt, 5 h  
 2) (PhO)<sub>2</sub>P(O)N<sub>3</sub> (1.4 eq.)  
 NEt<sub>3</sub> (4.0 eq.), toluene  
 65 to 100 °C, 8 h, 78%  
 3) 
  
**C** (1.1 eq.)  
 MeOH, rt, 2 h, 81%



D. Majee, S. Biswas, S. M. Mobin and S. Samanta\* *J. Org. Chem.* **2016** ASAP



tetrapetalone A

J. L. Wood *et al.* *Tetrahedron*, **2016**, *in press*  
 (DOI: 10.1016/j.tet.2016.03.011)