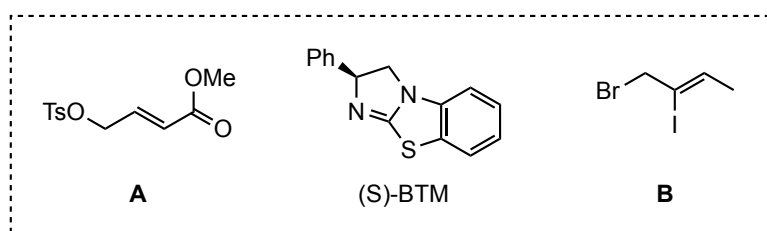
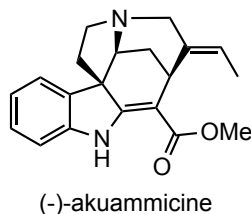


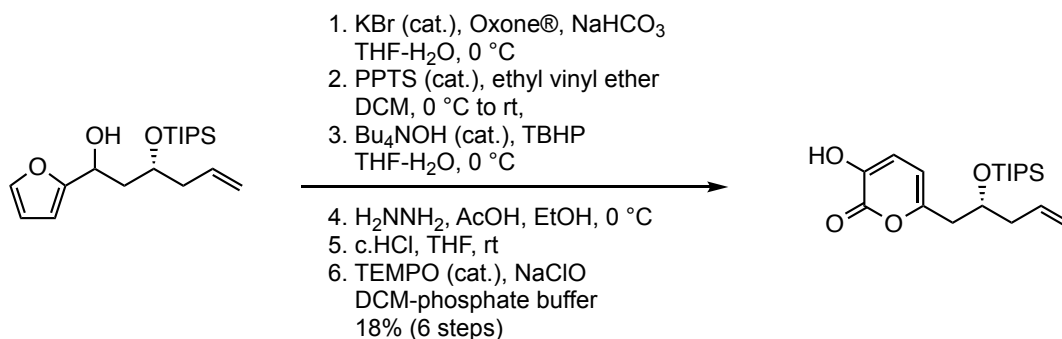
5. DEAD, PPh₃, PhMe, rt, 24 h then DBU, 80 °C, 16 h, 59%
 6. TFA, rt, 1.5 h

7. bromide **B**, *i*-Pr₂NEt, MeCN, rt, 1 h, 98% (2 steps)
 8. Pd(OAc)₂ (cat.), PPh₃, Et₃N, 70 °C, 4 h, 65%



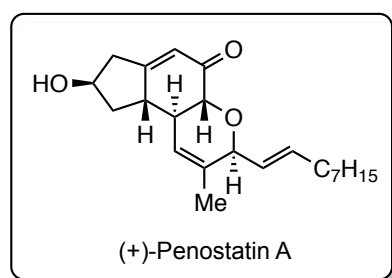
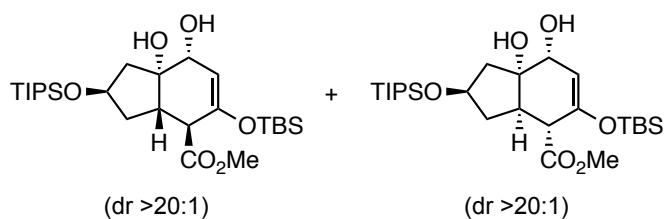
(S)-BTM is not a ligand of Pd catalyst.

T. N. Anaddon *et. al.*, *Angew. Chem. Int. Ed.* **2020**, Just Accepted.
 DOI: 10.1002/anie.202005151



1. TBSCl, imidazole, DCM, 0 °C, 89%
 2. Grubbs-II cat. (5 mol%), methyl acrylate, DCM, 59%

3. toluene, 100 °C, 84%
 4. AD-mix-β, MeSO₂NH₂, tBuOH/H₂O 85%



R. Tong *et al.*
Org. Lett. ASAP
 (doi: 10.1021/acs.orglett.0c01649)