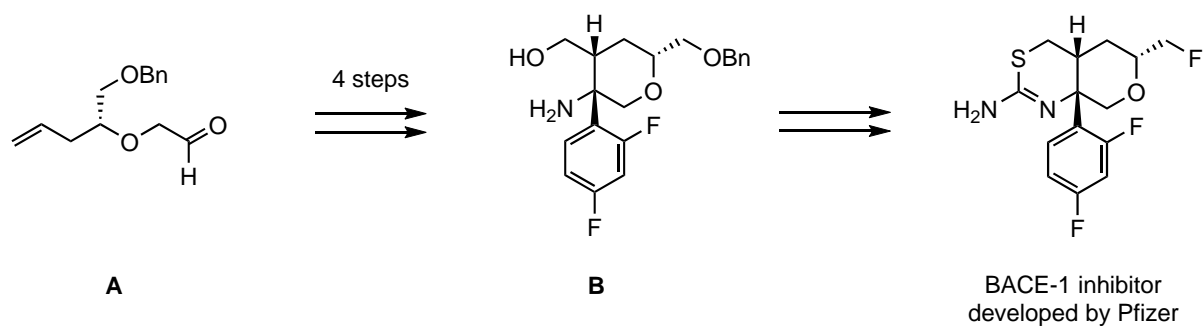
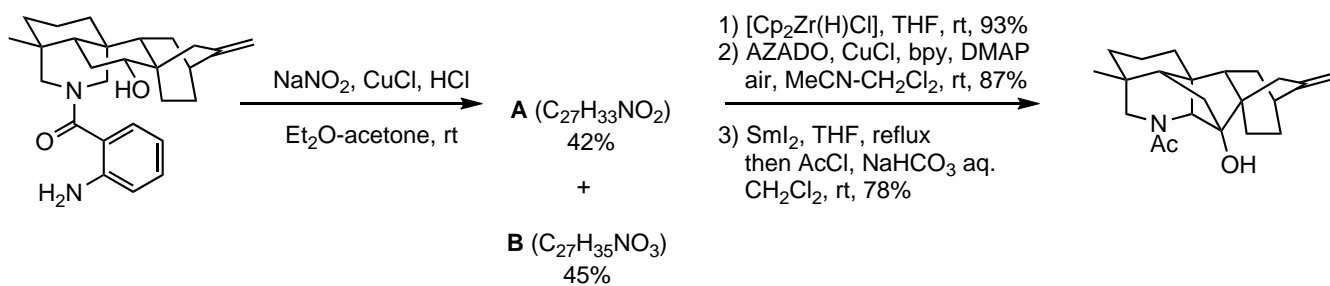


Propose a synthetic scheme for the conversion of aldehyde **A** into amine **B**, a precursor to the BACE-1 inhibitor.



C. R. Butler *et al.* *J. Med. Chem.* **2015**, *58*, 2678.



X.-H. Li, M. Zhu, Z.-Z. Wang, X.-Y. Liu*, H. Song, D. Zhang, F.-P. Wang, Y. Qin*
Angew. Chem. Int. Ed. **2016**, *55*, 15667.