

NASCENT CHAIN BIOLOGY

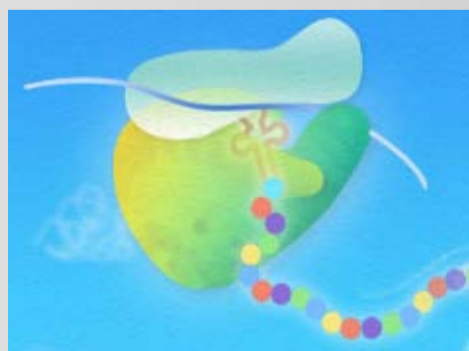
September

1 (Thu) – 3 (Sat)

2016

Japan

Fuji Lake Hotel
(Lake Kawaguchi)



Organized and Sponsored by
MEXT Grant-in-Aid for Scientific
Research on Innovative Areas,
Nascent Chain Biology
(Group Director: Hideki Taguchi)

Topics

QUALITY CONTROL

*Ribosome-associated Quality Control,
Protein Degradation, mRNA Decay*

RIBOSOME

*Translation Initiation/Elongation,
Translocon, Codon Optimality,
Translational Pausing*

NASCENT CHAIN

*Co-translational Protein Folding/
Degradation, Chaperone*

Invited Speakers (A-Z)

Bernd Bukau (University of Heidelberg)

Neil Bulleid (University of Glasgow)

Carlos Bustamante (UC Berkeley)

Agnieszka Chacińska (Inst MCB, Warsaw)

Patricia Clark (University of Notre Dame)

Toshiya Endo (Kyoto Sangyo University)

Ralf Erdmann (Ruhr-Universität Bochum)

Koreaki Ito (Kyoto Sangyo University)

Kazuhiro Nagata (Kyoto Sangyo University)

Takuya Ueda (University of Tokyo)

Daniel Wilson (University of Munich)



Deadline of application: June 27, 2016

Inquiry: nascent2016@mail.pharm.tohoku.ac.jp